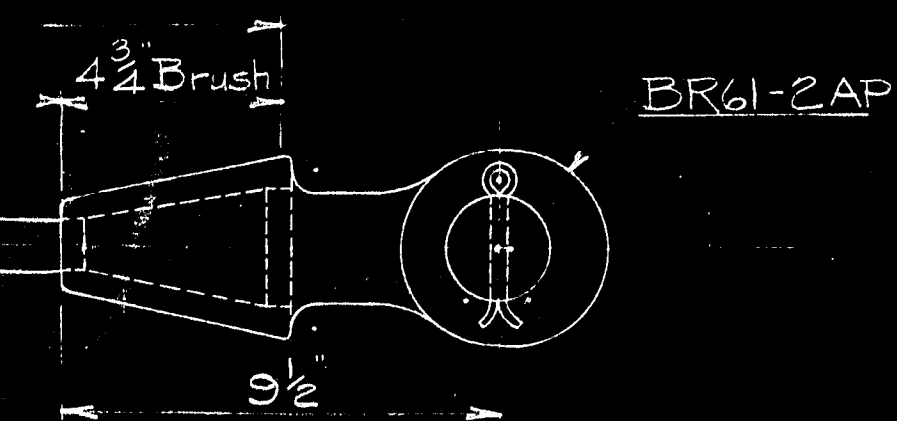


C - cut length  
B - bearing to bearing of Sockets

1/8 Galv. Bridge Cable

Black Point Band - 1/2 wide



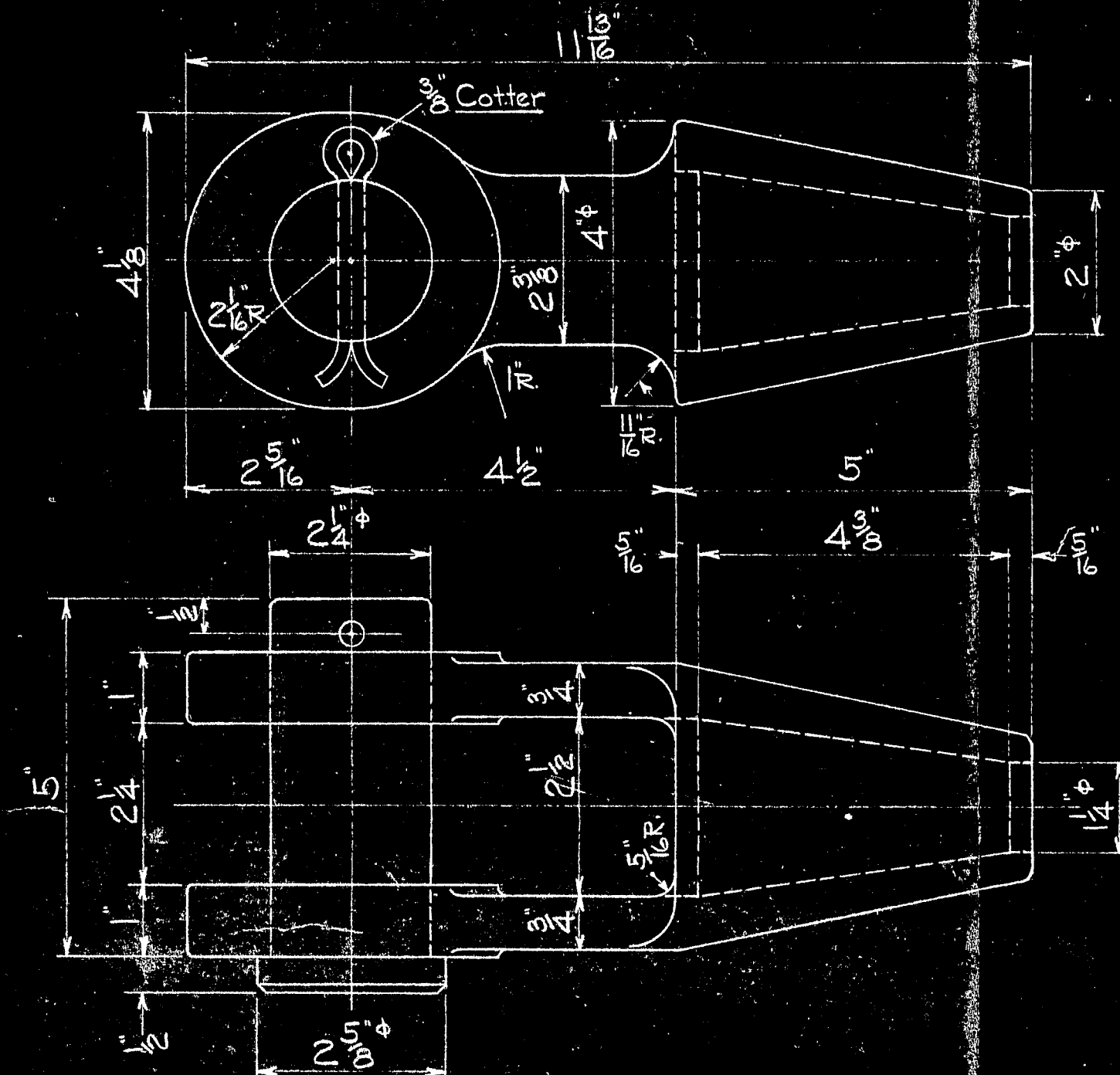
A - center to center of Pins

### SUSPENDERS

Measured at 15,450<sup>lb</sup> tension at 68°F

Each suspender shall have a longitudinal stripe painted on full length during time of prestressing

MARK	A	B	C	LOCATION
BR61-2A	12'-7 3/8"	6'-3 1/8"	11'-0 3/8"	Panel Point #1
BR61-2B	20'-5"	10'-2 1/2"	18'-10"	" " 2
BR61-2C	29'-3 1/2"	14'-7 1/2"	27'-8 1/2"	" " 3
BR61-2D	39'-3 3/8"	19'-7 1/8"	37'-8 3/8"	" " 4
BR61-2E	50'-5"	25'-2 1/2"	48'-10"	" " 5
BR61-2F	62'-7 3/8"	31'-3 3/8"	61'-0 3/8"	" " 6
BR61-2G	76'-0 1/2"	38'-0 1/2"	74'-5 1/2"	" " 7
BR61-2H	90'-6"	45'-3"	88'-11"	" " 8
BR61-2J	106'-1 1/2"	53'-0 1/2"	104'-6 1/2"	" " 9
BR61-2K	122'-10 1/2"	61'-5 1/2"	121'-3 1/2"	" " 10
BR61-2L	140'-9 3/8"	70'-4 1/8"	139'-2 3/8"	" " 11
BR61-2M	159'-10 3/8"	79'-11 1/8"	158'-3 3/8"	" " 12
BR61-2N	180'-0 3/8"	90'-0 3/8"	178'-5 3/8"	" " 13
BR61-2P	201'-4"	100'-8"	199'-9"	" " 14
BR61-2R	223'-9 1/2"	111'-10 1/2"	222'-2 1/2"	" " 15
BR61-2S	247'-3 3/8"	123'-7 1/8"	245'-8 3/8"	" " 16
BR61-2T	246'-7 3/8"	123'-3 3/8"	245'-0 3/8"	" " 18
BR61-2U	222'-8 1/2"	111'-4 1/2"	221'-1 1/2"	" " 19
BR61-2V	199'-11 1/2"	99'-11 1/2"	198'-4 1/2"	" " 20
BR61-2W	178'-3 3/8"	89'-1 1/2"	176'-8 3/8"	" " 21
BR61-2Y	157'-9 3/8"	78'-10 3/8"	156'-2 3/8"	" " 22
BR61-2Z	138'-5 3/8"	69'-2 3/8"	136'-10 3/8"	" " 23
BR61-2AA	120'-3 3/8"	60'-1 1/2"	118'-8 3/8"	" " 24
BR61-2AB	103'-3"	51'-7 1/2"	101'-8"	" " 25
BR61-2AC	87'-4 1/2"	43'-8 1/2"	85'-9 1/2"	" " 26
BR61-2AD	72'-8 1/2"	36'-4 1/2"	71'-1 1/2"	" " 27
BR61-2AE	59'-1 1/2"	29'-6 1/2"	57'-6 1/2"	" " 28
BR61-2AF	46'-9 1/2"	23'-4 1/2"	45'-2 1/2"	" " 29
BR61-2AG	35'-10 1/2"	17'-11 1/2"	34'-3 1/2"	" " 30
BR61-2AH	26'-8 5/8"	13'-4 5/8"	25'-1 5/8"	" " 31
BR61-2AJ	19'-2 3/8"	9'-7 3/8"	18'-4 3/8"	" " 32
BR61-2AK	13'-4 1/2"	6'-8 1/2"	11'-9 1/2"	" " 33
BR61-2AL	9'-2 1/2"	4'-7 1/2"	7'-7 1/2"	" " 34
BR61-2AM	6'-8 3/8"	3'-4 3/8"	5'-1 3/8"	" " 35
BR61-2AN	5'-10 3/8"	2'-11 3/8"	4'-3 3/8"	" " 36



BR61-2AP - SOCKET  
Drop Forging of Mild Steel

PRELIMINARY PRINT  
For approval of Socket BR61-2AP only

CHECKED BY A.F.S.

APPROVED  
Robinson & Steinman  
Phoenix Bridge Co.  
Feb 23 1938

DATE  
Feb 23 1938

BR61-2AP	276	See Note	1779	Socket
BR61-2AN	2	—	1824	Suspender
BR61-2AM	4	—	"	"
BR61-2AL	4	—	"	"
BR61-2AK	4	—	"	"
BR61-2AJ	4	—	"	"
BR61-2AH	4	—	"	"
BR61-2AG	4	—	"	"
BR61-2AF	4	—	"	"
BR61-2AE	4	—	"	"
BR61-2AD	4	—	"	"
BR61-2AC	4	—	"	"
BR61-2AB	4	—	"	"
BR61-2AA	4	—	"	"
BR61-2Z	4	—	"	"
BR61-2Y	4	—	"	"
BR61-2X	4	—	"	"
BR61-2W	4	—	"	"
BR61-2V	4	—	"	"
BR61-2U	4	—	"	"
BR61-2T	4	—	"	"
BR61-2S	4	—	"	"
BR61-2R	4	—	"	"
BR61-2Q	4	—	"	"
BR61-2P	4	—	"	"
BR61-2O	4	—	"	"
BR61-2N	4	—	"	"
BR61-2M	4	—	"	"
BR61-2L	4	—	"	"
BR61-2K	4	—	"	"
BR61-2J	4	—	"	"
BR61-2I	4	—	"	"
BR61-2H	4	—	"	"
BR61-2G	4	—	"	"
BR61-2F	4	—	"	"
BR61-2E	4	—	"	"
BR61-2D	4	—	"	"
BR61-2C	4	—	"	"
BR61-2B	4	—	"	"
BR61-2A	4	—	1824	Suspender

NAME	BR61-2A	DATE	1824	NAME	BR61-2A
JOHN A. ROEBLING'S SONS CO. TRENTON, N. J.					
DEER ISLE SEDGWICK BRIDGE					
HANCOCK COUNTY, MAINE					
SUSPENDER DETAILS					
INSTRUCTIONS		DATE		S. No.	
API SOLVED		MAY 17 1936		1-26-35	
ROBINSON & STEINMAN		TO PHOENIX BRIDGE CO.		H.A.S. 4-29-37	
BR61		2		BR61 2	